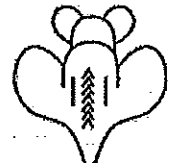


Body Condition Scoring (BCS) for Mice
Loyola University Chicago
Comparative Medicine

BC 1

Mouse is emaciated

- Skeletal structure extremely prominent; little or no flesh cover.
- Vertebrae distinctly segmented.



BC 2

Mouse is under conditioned

- Segmentation of vertebral column evident.
- Dorsal pelvic bones are readily palpable.



BC 3

Mouse is well conditioned

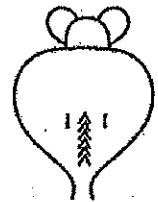
- Vertebrae and dorsal pelvis not prominent; palpable with slight pressure.



BC 4

Mouse is over conditioned

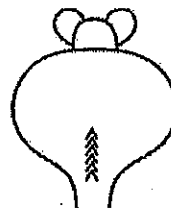
- Spine is a continuous column.
- Vertebrae palpable only with firm pressure.



BC 5

Mouse is obese

- Mouse is smooth and bulky.
- Bone structure disappears under flesh and subcutaneous fat.



A "+" or a "-" can be added to the body condition score
If additional increments are necessary (i.e. 2+, 2, 2-)